

# Hawai'i County Kīlauea Lava Eruption Recovery & Resilience



# "Fissure 8" and Lava River



# Lava Reaches Kapoho June 3, 2018



# Shelter for Survivors in Pāhoā

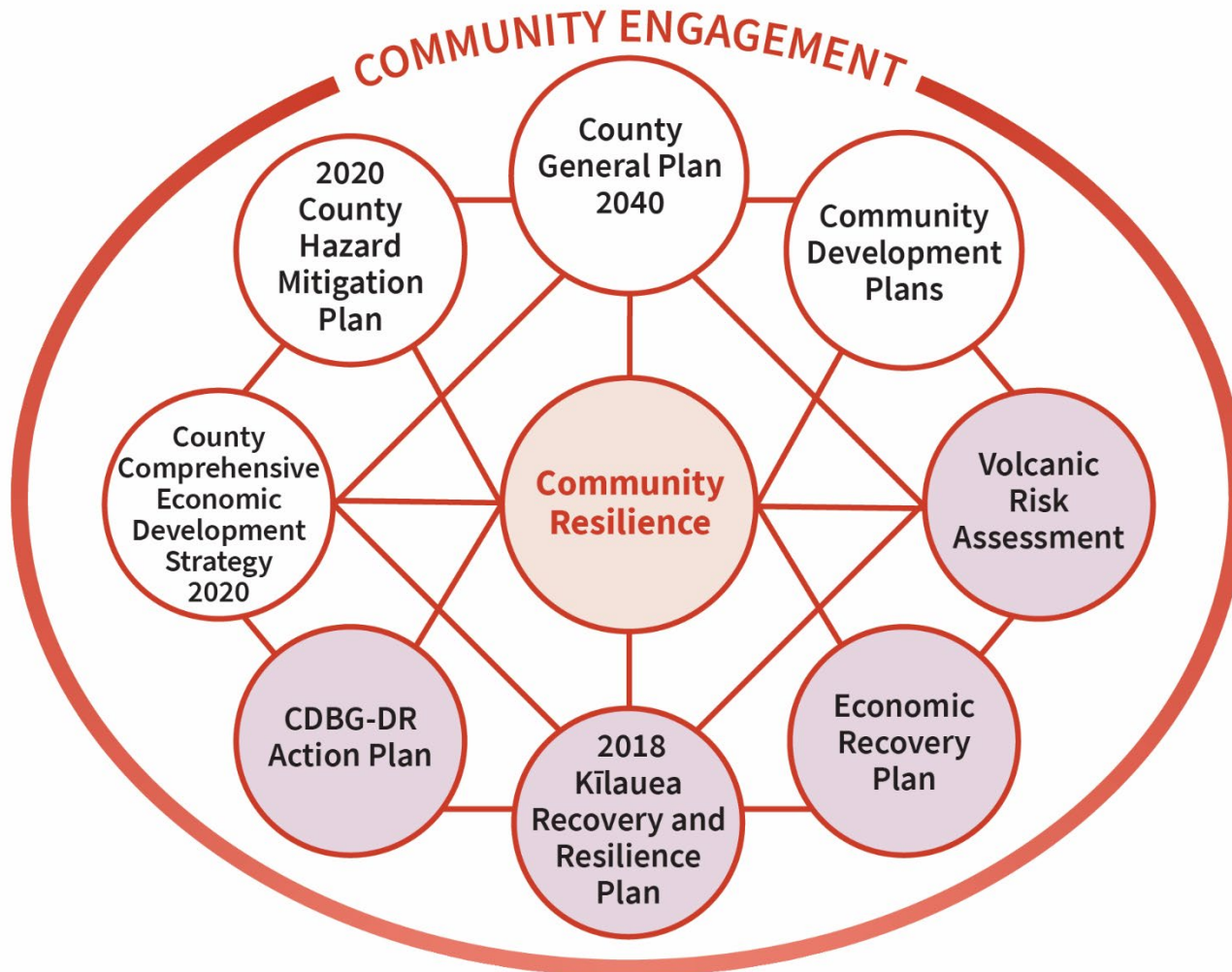




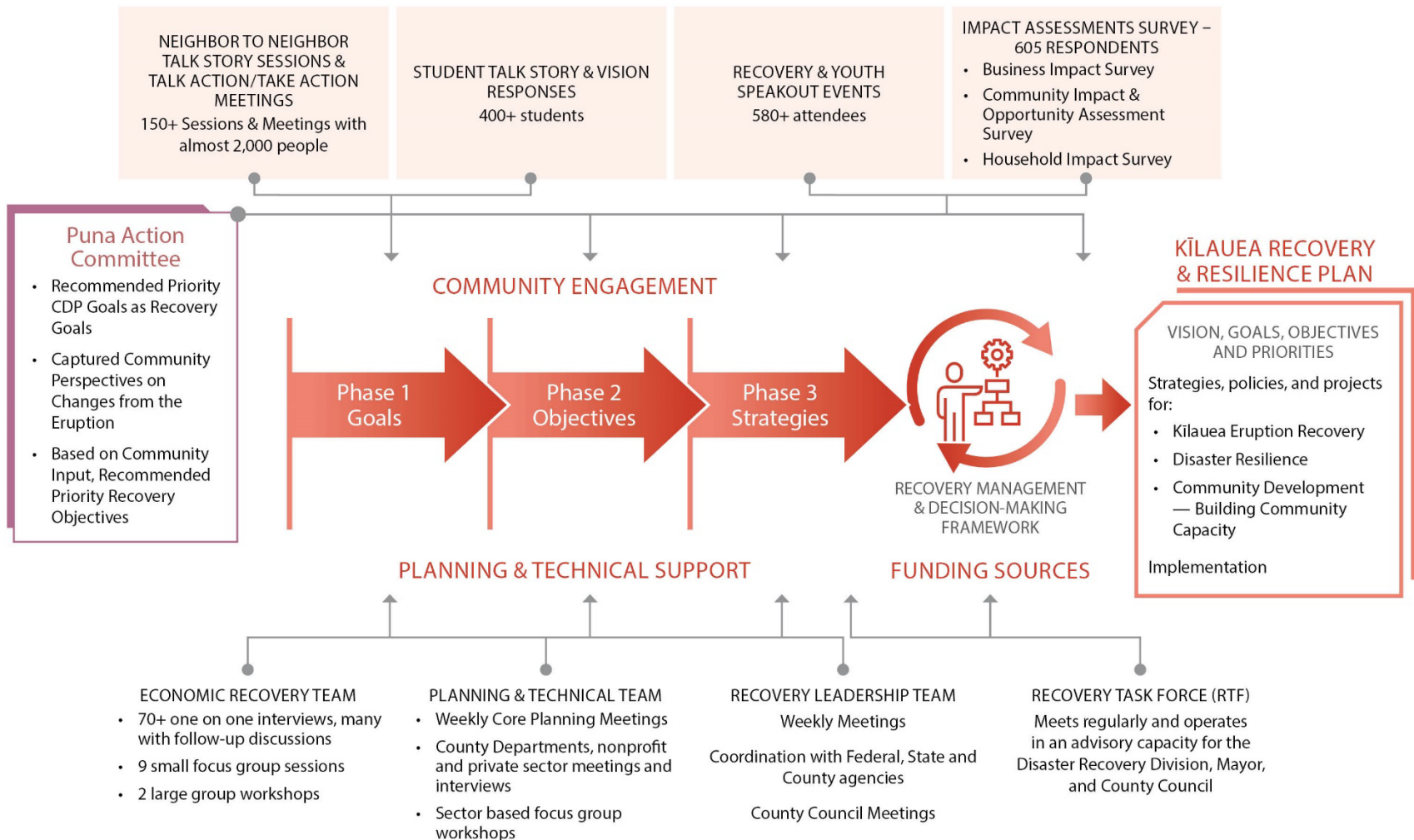
# Ongoing Heat at Ala'ili



# Planning Coordination / Integration



# Recovery Community Engagement



# Vision for Recovery + Resilience

To foster resilient communities that respects the Puna region's ever-changing landscape. This vision honors 'āina, supports our communities to recover from the 2018 Kīlauea eruption, builds our capacity to mitigate against disaster events by reducing risk to life and property, and facilitates economic opportunity and well-being for residents.



# Kīlauea Recovery + Resilience Plan

- **Near-Term Goal:** Facilitate projects and efforts that continue to provide relief to residents and businesses impacted by the eruption in the Puna District.
- **Long-Term Goal:** Implement strategies, policies, and projects that protect public health and safety, enhance community well-being, and help create a resilient economy islandwide.

# Recovery + Resilience Strategies

**Kīlauea Eruption Recovery:** Invest in infrastructure that supports recovery, promotes housing security, addresses eruption-impacted properties, and supports community economic recovery.

**Disaster Resilience:** Improve community planning and disaster preparedness, manage development in high hazard risk areas through land use, and implement mitigation measures for natural and built infrastructure.

**Building Community Capacity:** Build networks and community capacity, invest in targeted revitalization efforts in Puna to support disaster resilience and economic growth, identify areas for natural and cultural resources management and agriculture development, and improve access to goods and services.

# Key Decisions + Priorities

- Voluntary housing buyout program for inundated and isolated properties – focus on LMI, primary homes, where public roads are not being restored
- Targeted restoration of public roads focusing on regional circulation, access to kipuka and farmland
- Long-term management of buyout areas
- Preservation of natural and cultural resources
- Recovery from economic impacts from the eruption – during current COVID-19 pandemic

# Lessons Learned

- In light of hazard exposure, how much development to allow indirectly or enable directly
- Disaster recovery framework and capacity to rise to the challenge of long-term recovery
- The time to make recovery decisions on entitlements, infrastructure and community development is before a disaster
- Balancing planning fatigue with the need to coordinate planning efforts.
- Community engagement that is inclusive of all—no one is advocating for those who want to leave



# Unique Challenges

- Applying the mo'olelo of place in a contemporary context of hazard mitigation
- Managing buyout areas in neighborhoods that may not be congruent in terms of site or use
- Working with community undergoing physical change and emotional trauma
- Kuleana: Community / County / Collective
- Expediency of immediate recovery vs. time to manage recovery process and federal funding
- Defining what it means to “bounce forward” and resilience as a process, not an outcome

# Kīlauea Recovery and Resilience Plan

